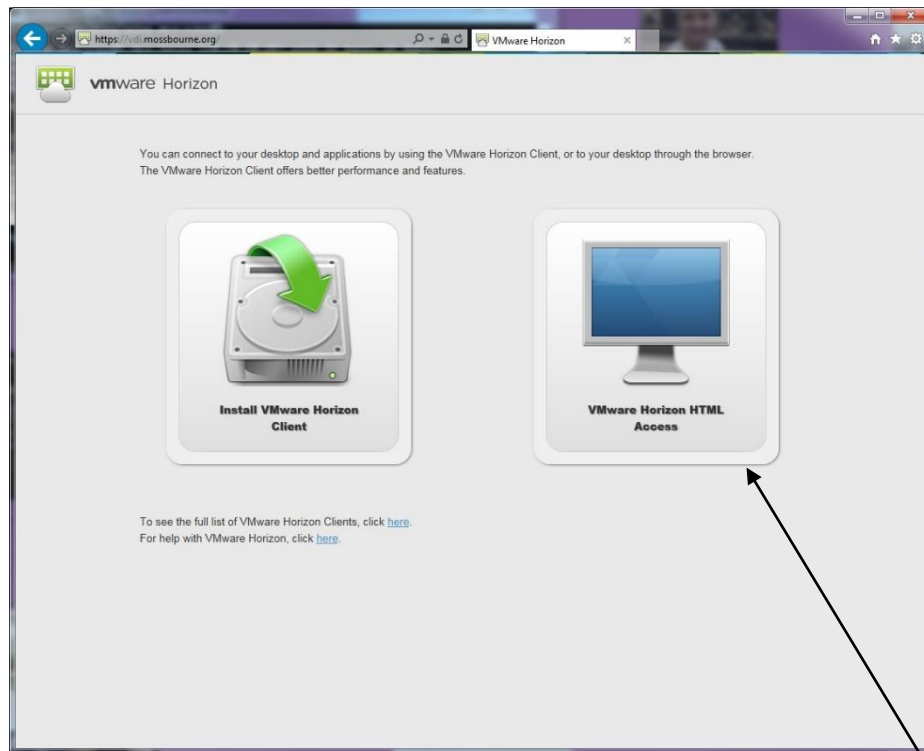


VDI home install instructions for Windows or Mac

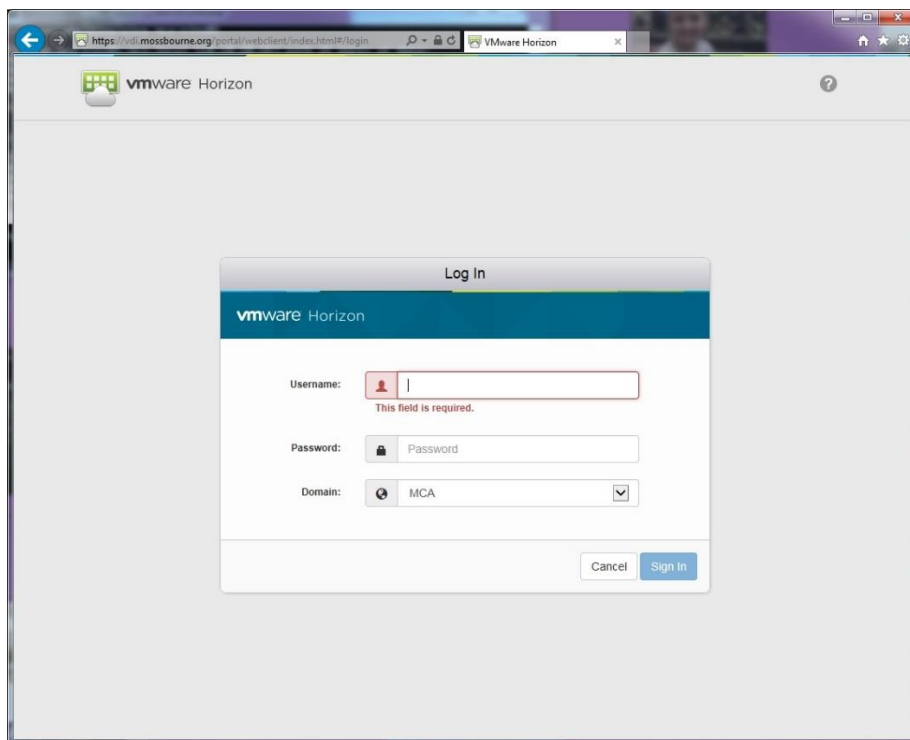
Please navigate to 'Staff access' on the academy website or to <https://vdi.mossbourne.org/>

Once you have navigated the website you will be presented with two options:

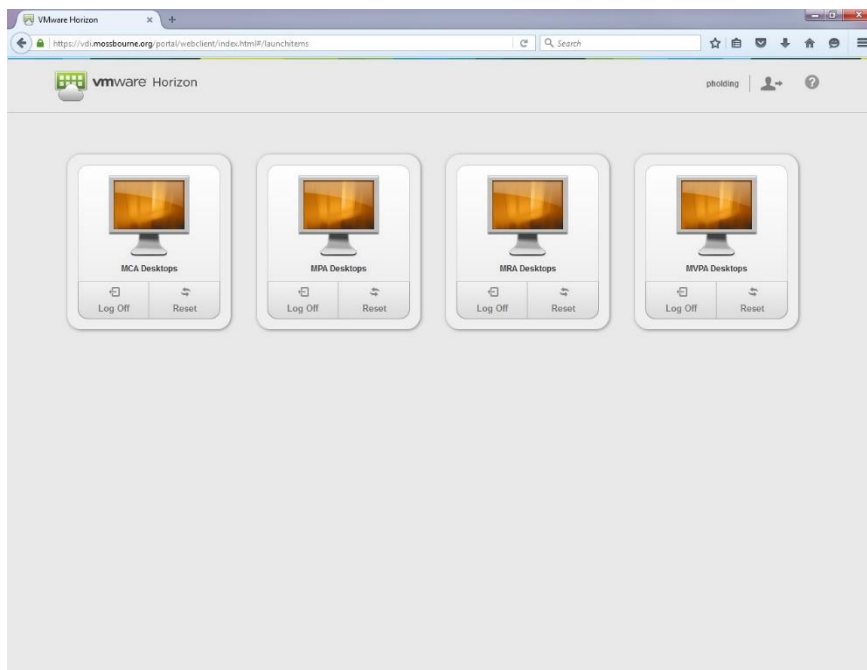


You can now run the desktop within your web browser using the second option:

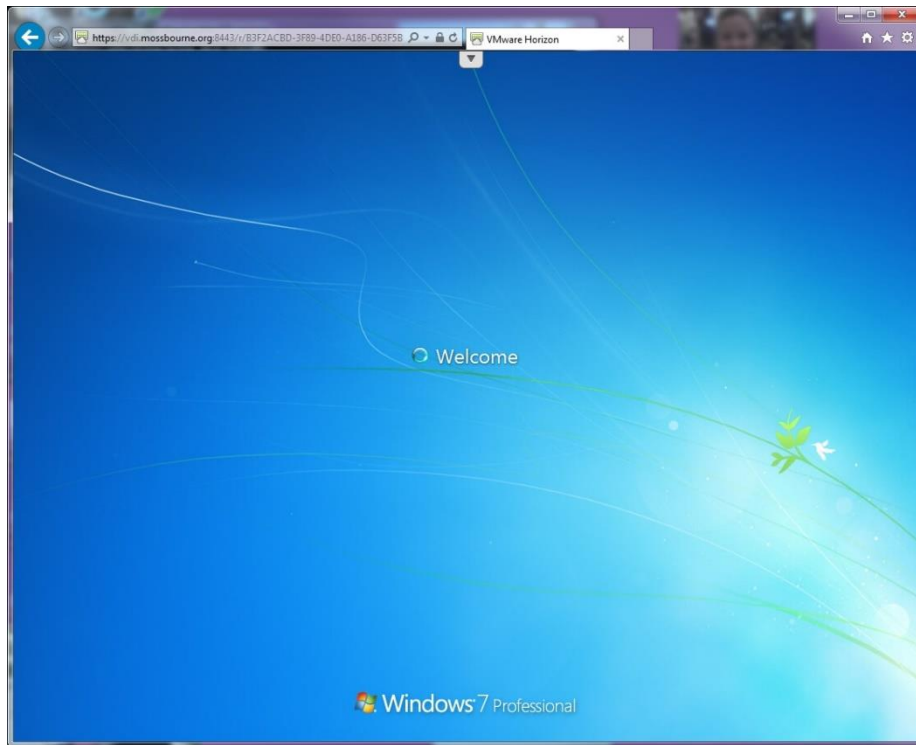
This will present you with a login page:



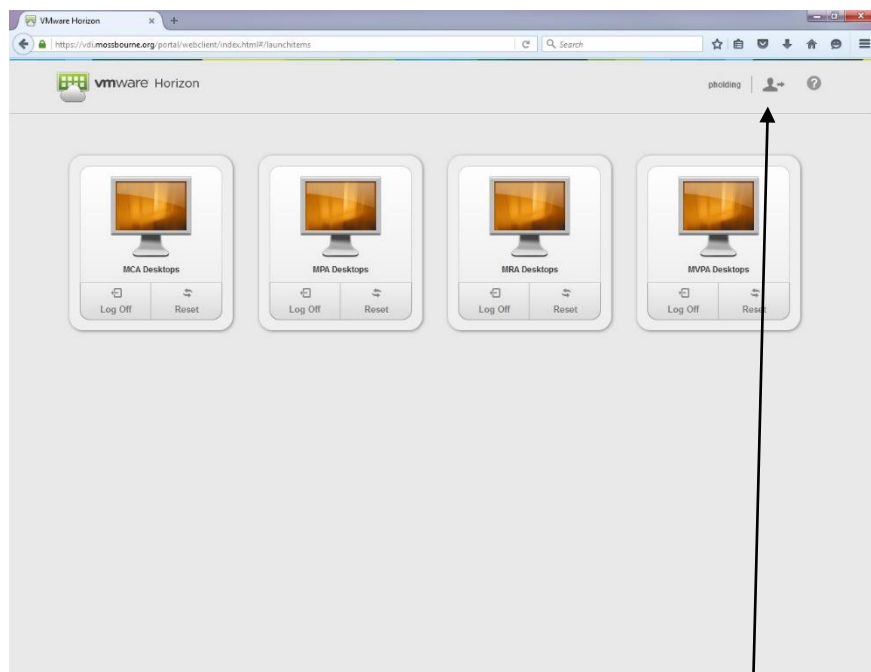
Please continue to use your normal network username and password to access the service. Once you are logged on you will see the desktop pool that you have been enabled to use:



To open and automatically logon to a desktop, just click the monitor on the desktop pool within the web browser:

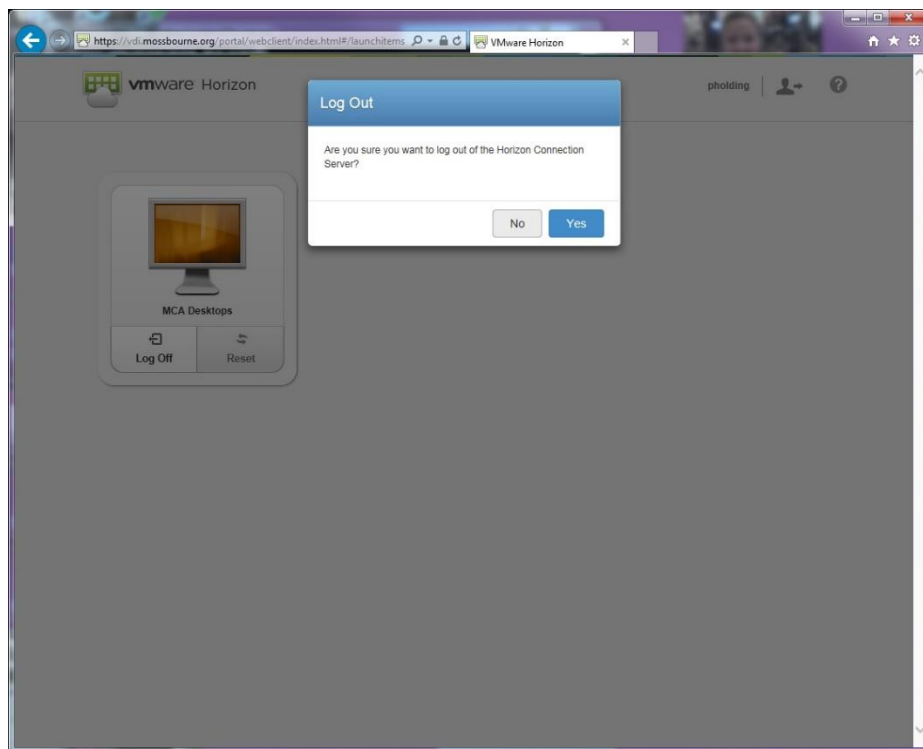


You can use the desktop service as you did previously with access to office 2016 and SIMS. Once you log off you will be taken back to the desktop pool options window:



You can then log out of the service from the top left of the screen:

You will then be asked to confirm that you wish to log off:



You will then see the following screen once you have logged out, you can now close the web browser or re-connect:

